

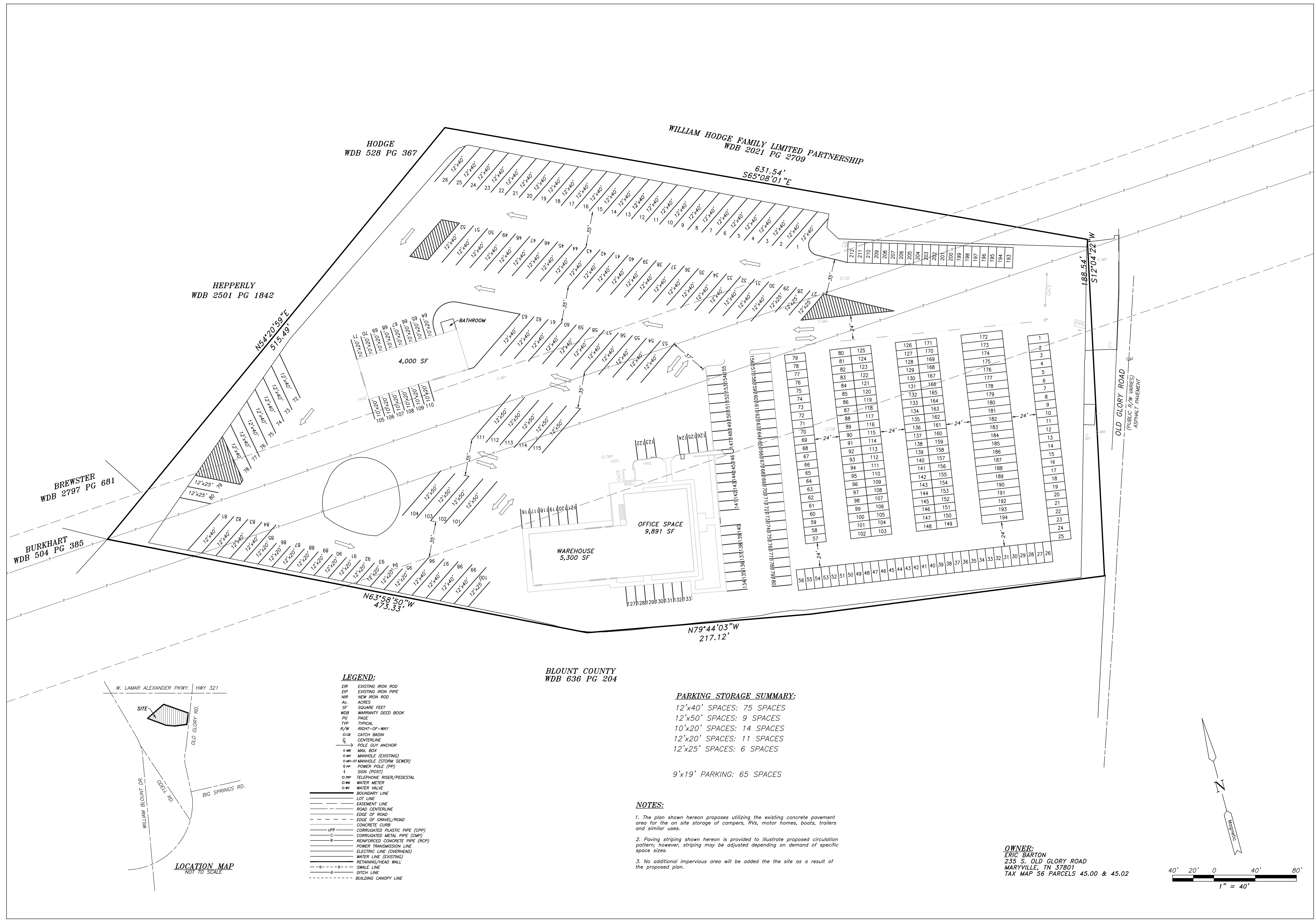


STERLING
ENGINEERING, INC.
LAND SURVEYING
CIVIL ENGINEERING
CONSULTING
LAND PLANNING

1020 WILLIAM BLOUNT DRIVE
MARYVILLE, TENNESSEE
37802-8401
P.O. BOX 4878
MARYVILLE, TENNESSEE
37802-4878
PHONE: VOL-984-3905
FAX: VOL-981-2815
www.sterling.us.com

MARYVILLE, TN

LEASE EXHIBIT
**BOAT AND MOTOR HOME
STORAGE FACILITY**
ERIC BARTON



BLOUNT COUNTY
WDB 636 PG 204

PARKING STORAGE SUMMARY:

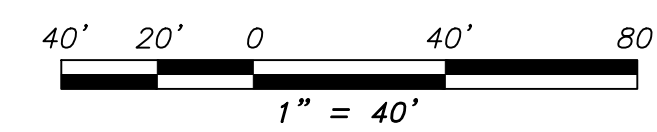
- 12'x40' SPACES: 75 SPACES
- 12'x50' SPACES: 9 SPACES
- 10'x20' SPACES: 14 SPACES
- 12'x20' SPACES: 11 SPACES
- 12'x25' SPACES: 6 SPACES

9'x19' PARKING: 65 SPACES

NOTES:

1. The plan shown hereon proposes utilizing the existing concrete pavement area for the on site storage of campers, RVs, motor homes, boats, trailers and similar uses.
2. Paving striping shown hereon is provided to illustrate proposed circulation pattern; however, striping may be adjusted depending on demand of specific space sizes.
3. No additional impervious area will be added the site as a result of the proposed plan.

OWNER:
ERIC BARTON
235 S. OLD GLORY ROAD
MARYVILLE, TN 37801
TAX MAP 56 PARCELS 45.00 & 45.02



DATE	BY	REVISIONS

SHEET	
EX	
DESIGNED:	SDJ
DRAWN:	SDJ
CHECKED:	
DATE:	11/13/19
SCALE:	1" = 40'
DRAWING:	3829L-CP2
PROJECT NO.:	SEI#3829-L